

Spannzangen

Collets

Pinces

+7 812 335 59 35
info@sunttools.ru



www.dieterle-tools.com



SPANNZANGEN - COLLETS - PINCES

Inhalt - Contents - Sommaire

- Seite / Page 1: **Zuordnungstabelle für Spannzangen Reihe 100**
Assignment chart for collets
Table de coordination pour pinces
- Seite / Page 2: **Druckspannzangen Reihe 100**
Dead length collets series 100
Pince poussée serie 100
- Seite / Page 3: **Vorschubzangen Reihe 200**
Feedfinger collets series 200
Pince d'avance serie 200
- Seite / Page 4: **Zugspannzangen Reihe 300**
Drawback collets series 300
Pince tirée serie 300
- Seite / Page 5: **ER / ESX – Spannzangen Reihe 400**
ER / ESX – type collets, series 400
Pince type ER / ESX, serie 400
- Seite / Page 6: **Rubber-Flex Spannzangen Reihe 700**
Rubber-Flex collets series 700
Pince Rubber-Flex, serie 700
- Seite / Page 7: **Synchron-Spannzangen für Gegenspindel**
Collets for synchronized spindle
Pince pour broche de préhension
- Seite / Page 8: **Doppelkegel-Spannzangen**
Double cone collets
Pince biconique
- Seite / Page 9: **Spannhülsen für Lademagazine**
Withdrawal sleeves for bar feeders
Douilles de serrage pour magasins de chargement
- Seite / Page 10: **Spannhülsen-Lagerungen für Lademagazine**
Withdrawal sleeve beddings for bar feeders
Logements de douilles de serrage pour magasins de chargement
- Seite / Page 11: **Spannfinger für Drehautomaten**
Chuck levers for automatic lathes
Doigts d'entraînement pour tours automatiques

**Zangen für Mehrspindelautomaten (Reihe 9000), sowie weitere Spannzangentypen:
Auf Anfrage lieferbar! Other collets: On request! Autres pinces: Sur demande!**

ZUORDNUNGSTABELLE FÜR SPANNZANGEN REIHE 100

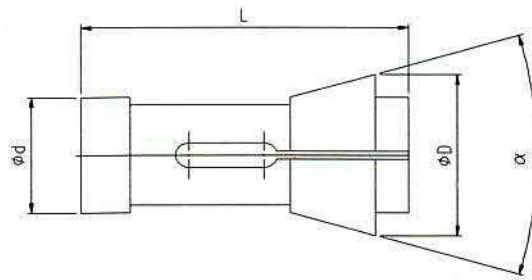
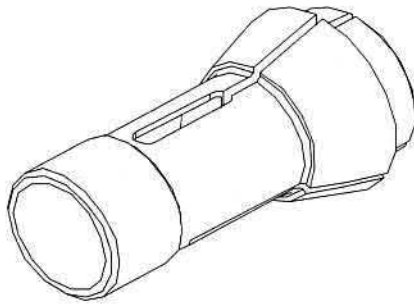
Maschine	Maschinentype	Spannzange Collet Pince
Bechler	A 7 - AE 7	111 E
Bechler	AE 10 - AR 10	117 E
Bechler	B 12	127 E
Bechler	B 16	139 E
Bechler	B 20 - BR 20	146 E
Citizen	D 10 - F 10 - L 10 - G 10	120 E
Citizen	B 12 - F 12	1212 E
Citizen	L 16 - F 16 - D 16 - G 16 - L 20	145 E
Citizen	M 20 - F 20 - E 20	145 E
Citizen	F 25 - L 25 - E 25	157 E
Citizen	E 32 - G 32	1536 E (F37)
Gauthier	GM 75	118 E
Gauthier	GM 100 / 127	120 E
Gauthier	GM 20	145 E
Gauthier	GM 25	157 E
Gildemeister	GLD 12	120 E
Gildemeister	GLD 16	138 E
Gildemeister	GLD 20	145 E
Gildemeister	GLD 25	1446 E
Index	ON - OR	136E
Index	12 - DG12 - RN12	140E
Index	18 - 25 - C19 - DG20	148E
Index	25	162E
Index	24 - C29 - B30 - ER25 - ER26 - GS30	163E
Index	36	171E
Index	36 - B42 - B60 bis 36mm Drm. - ER42 - Ge42	173E
Index	52 - B60 über 36mm Drm. - G65	185E
Maier	ML 20 C - ML 20 D	145 E
Maier	ML 26 C - ML 26 D	161 E
Maier	ML 32 D	1536 E (F37)
Manurhin	KMX 20	145 E
Manurhin	KMX 226 - KMX 326C - SWING 20	161 E
Manurhin	SWING 13 - KMX 413	136 E
Manurhin	SWING 26	164 E
Manurhin	Traminer 13	127 E
Manurhin	Traminer 16	138 E
Manurhin	Traminer 20	145 E
Manurhin	XL 32 - XS 32	171 E
Star	SW 7-7	109 E
Star	JNC 10 - SW 7-10	120 E
Star	VNC 12 - SNC 15 - RNC 16 - SR 16	138 E
Star	VNC 16 - KNC 16 - KJR 16 - SA 16	138 E
Star	VNL 20 - BR 20 - SR 20 - KNC 20 - SV 20	145 E
Star	SNC 25	157 E
Star	JNC25-JNC32-KNC25	1536 E (F37)
Strohm	M 105 - 125	120 E
Strohm	M 205	145 E
Strohm	M 255	157 E
Tornos	ENC 74 - ENC 75	116 E
Tornos	ENC 162 - ENC 164	136 E
Tornos	ENC 167	145 E
Tornos	Deco 2000-7	109 E
Tornos	Deco 2000-10	116 E
Tornos	Deco 2000-13	136 E
Tornos	Deco 2000-20	145 E
Tornos	Deco 2000-26	1446 E
Tornos	Mult-Deco	9039 E
Tornos	Top 100	116 E
Traub	TNL 12-7	136 E
Traub	TNL 16-16	138 E
Traub	A15 - TD16	140E
Traub	TNL 16-20	144E
Traub	TNL 26	157 E
Traub	TNL 32	1536 E (F37)
Traub	A20	148E
Traub	A25 - A26 - TD26	161E
Traub	A36 - TD36	171E
Traub	A42 - TB42	173E
Traub	A60 - TB60	185E
Tsugami	NT/NP 11	120E
Tsugami	NT/NP 16/17	F22
Tsugami	NT/NP 20	145E
Tsugami	NT/NP 32	1536E (F37)

Spannzangenanschlüsse für Spannzangen Reihe 100: Bitte fordern Sie unsere Unterlagen an!

Seite 1

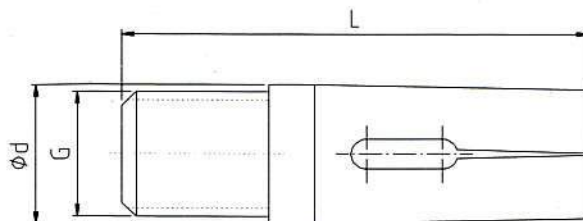
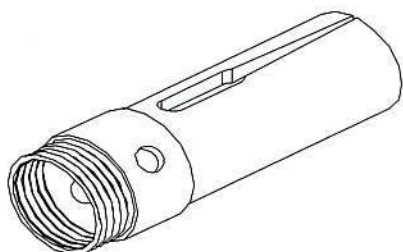
Collet stops: Please ask for our special leaflet! **Butées de profondeur:** Dans un prospectus séparé!

DRUCKSPANNZANGEN REIHE 100



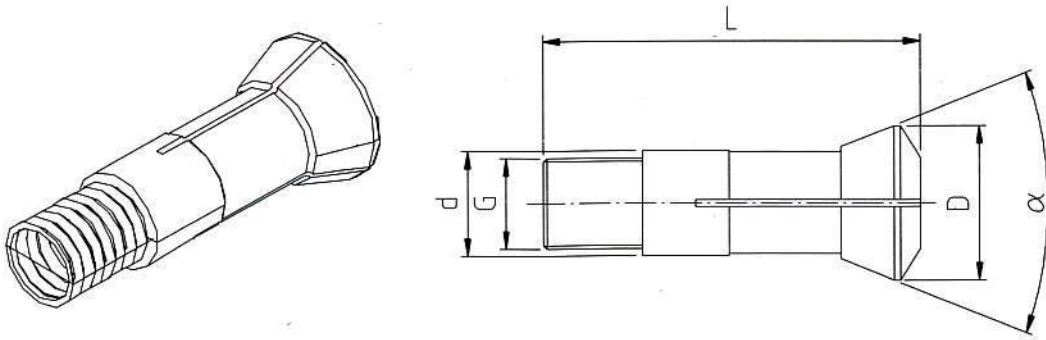
Bestell-Nr.	d	D	L	α	●	◆	■
100 E	6	10	39	30°	1,5 - 4,5		
101 E	8	12	42	32°	1,0 - 6,0		
103 E	8	14	35	30°	1,5 - 5,0		
109 E	10	15,5	47,5	40°	1,5 - 7,5		
110 E	10	16	43	30°	1,5 - 7,0		
111 E	10	16	47	40°	1,5 - 7,0		
116 E	13	19	63,5	32°	2,0 - 10,0	4,0 - 8,0	4,0 - 6,0
117 E	14	18	46	26°	1,5 - 10,5	4,0 - 8,0	4,0 - 7,0
120 E	15	21	64	32°	1,0 - 12,5	4,0 - 9,0	4,0 - 7,0
123 E	16	22	55	32°	2,0 - 12,0		
1212 E	16	21	64	32°	1,5 - 13,0		
125 E	17,5	22	51	30°	1,0 - 14,0		
127 E	18	25	67	30°	3,0 - 13,0	4,0 - 10,0	4,0 - 8,0
136 E	20	26	54	30°	1,5 - 16,0		
138 E	20	28	67	32°	2,5 - 16,0	4,0 - 14,0	4,0 - 11,0
140 E	22	30	55	30°	1,5 - 16,0	3,0 - 14,0	3,0 - 11,0
143 E	25	31	54	30°	3,0 - 16,0	6,0 - 14,0	6,0 - 11,0
144 E	25	34	65	30°	3,0 - 20,0	4,0 - 16,0	4,0 - 14,0
145 E	25	35	77	32°	3,0 - 20,0	4,0 - 17,0	4,0 - 15,0
147 E	27	38	73	30°	1,5 - 23,0		
148 E	28	38	70	30°	1,5 - 24,0	4,0 - 20,0	4,0 - 16,0
156 E	30	39,3	87	30°	3,0 - 25,0	4,0 - 22,0	5,0 - 14,0
1446 E	30	38	65	30°	3,0 - 26,0	4,0 - 22,0	4,0 - 18,0
157 E	30	42	80	32°	3,0 - 25,0		
161 E	32	45	75	30°	2,0 - 26,0	4,0 - 22,0	4,0 - 18,0
1497 E	34	44	80	32°	3,0 - 28,0		
162 E	35	43	70	30°	3,0 - 25,0	4,0 - 22,0	5,0 - 17,0
163 E	35	48	80	30°	2,0 - 30,0	4,0 - 27,0	5,0 - 22,0
1536 E	37	47	92	32°	4,0 - 32,0		
164 E	38,1	49,2	108	30°	3,0 - 32,0	6,0 - 27,0	6,0 - 22,0
171 E	42	55	94	30°	3,0 - 37,0	4,0 - 32,0	4,0 - 26,0
173 E	48	60	94	30°	1,0 - 43,0	6,0 - 38,0	6,0 - 28,0
177 E	58	70	94	30°	6,0 - 52,0	9,0 - 45,0	9,0 - 36,0
185 E	66	84	110	30°	4,0 - 60,0	8,0 - 50,0	7,0 - 40,0
190 E	88	106	115	30°	60,0 - 80,0		
193 E	90	107	130	30°	20,0 - 80,0		
196 E	112	138	120	30°	24,0 - 100,0	24,0 - 85,0	40,0 - 70,0

VORSCHUBZANGEN REIHE 200



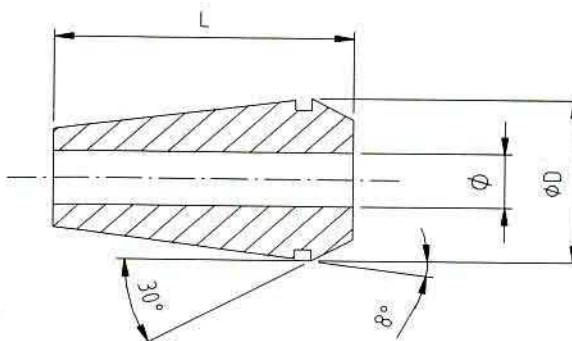
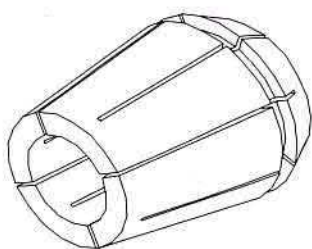
Bestell-Nr.	d	L	Gewinde	●	◆	■
207 E	18	70	M16 x 1,0 L	1,5 - 12,5	4,0 - 12,0	4,0 - 9,0
217 E	21	70	M20 x 1,0 L	3,0 - 16,0	5,0 - 14,0	6,0 - 11,0
220 E	24	85	M22 x 1,0 L	3,0 - 18,0	4,0 - 16,0	5,0 - 12,0
236 E	30	95	M28 x 1,0 L	3,0 - 24,0	4,0 - 21,0	7,0 - 16,0
237 E	31	90	M29 x 1,0 L	3,0 - 25,0	4,0 - 22,0	5,0 - 18,0
254 E	42	116	M40 x 1,0 L	4,0 - 36,0	8,0 - 31,0	8,0 - 25,0
273 E	60	140	M58 x 1,0 L	10,0 - 52,0	16,0 - 41,0	
<p>HM-bestückte Vorschubzangen, einstellbar: auf Anfrage lieferbar ! Adjustable feed finger collets with carbide inset: available on request ! Pincés d'avance réglables, à carbure: livrable sur demande !</p>						

ZUGSPANNZANGEN REIHE 300



Bestell-Nr.	d	D	L	α	Gewinde	●
324 E	15	21,5	55,5	40°	M13 x 1	1,5 - 13,0
349 E	20	26,3	73	30°	S 19,7 x 1,667	1,5 - 20,0
358 E	23	32	86	40°	M21,2 x 1	1,5 - 20,0
363 E	25	33,5	89	32°	M23 x 1	1,5 - 22,0
385 E	31,75	37,5	89	20°	31,45 x 1/20"	1,5 - 26,0

ER / ESX - SPANNZANGEN REIHE 400



Bestell-Nr.	E-Nr.	D	L	●
ER 8	4004 E	8,5	13,5	1,0 - 5,0
ESX 9	4006 E	9	14,5	1,0 - 5,0
ER 11	4008 E	11,5	18	1,0 - 7,0
ESX 12	424 E	12	19,5	1,0 - 7,0
ER 16 (ESX 16)	426 E	17	27	1,0 - 10,0
ER 20 (ESX 20)	428 E	21	31,5	1,0 - 13,0
ER 25 (ESX 25)	430 E	26	34	1,5 - 16,0
ER 32 (ESX 32)	470 E	32,5	40	2,0 - 20,0
ER 40 (ESX 40)	472 E	41	46	3,0 - 26,0
ER 50	477 E	52	60	6,0 - 34,0

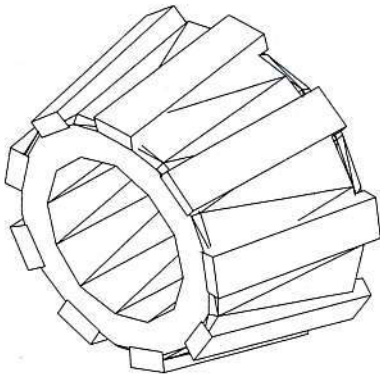
Spannzangen-Sätze DIN 6499-B auf Kunststoff-Auflage

Collet-Sets on plastic rest

Assortiment de pinces sur moule plastique

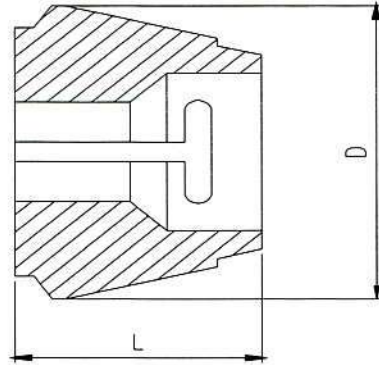
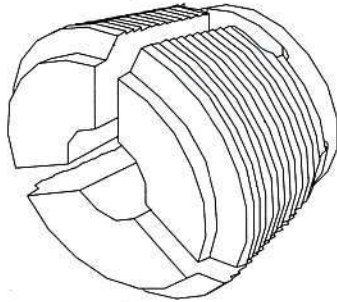
Bestell-Nr.	Satz / Set	●	STG
4004 E - S	9 St. / pcs.	1,0 - 5,0	0,5
4008 E - S	13 St. / pcs.	1,0 - 7,0	0,5
426 E - S	10 St. / pcs.	1,0 - 10,0	1,0
428 E - S	12 St. / pcs.	2,0 - 13,0	1,0
430 E - S	15 St. / pcs.	2,0 - 16,0	1,0
470 E - S	18 St. / pcs.	3,0 - 20,0	1,0
472 E - S	23 St. / pcs.	4,0 - 26,0	1,0

RUBBER-FLEX SPANNZANGEN REIHE 700



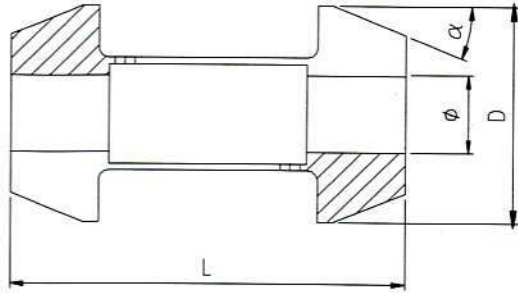
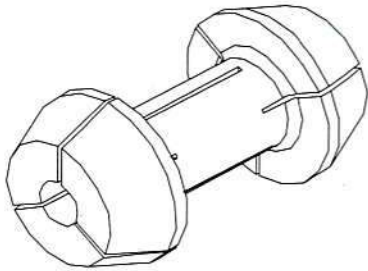
Bestell-Nr.	austauschbar mit interchangeable with interchangeable avec	Spanndurchmesser chucking diameters diamètres de serrage	Spanntoleranz chucking tolerance tolerance de serrage
755 E Reihe 12	140 E	3,5 - 15,5	± 0,5
760 E Reihe 18	148 E	5,0 - 19,0	± 1,0
765 E Reihe 20	161 E	5,0 - 25,0	± 1,0
770 E Reihe 24	163 E	7,0 - 29,0	± 1,0
775 E Reihe 36	173 E	8,0 - 42,0	± 1,0
780 E Reihe 52	185 E	20,0 - 60,0	± 1,0
Super-Grip Spannzangen auf Anfrage! Super-Grip collets on request! Pinces Super-Grip sur demande!			

**SYNCHRON-SPANNZANGEN FÜR GEGENSPINDEL
(INDEX-ABC-REIHE)**



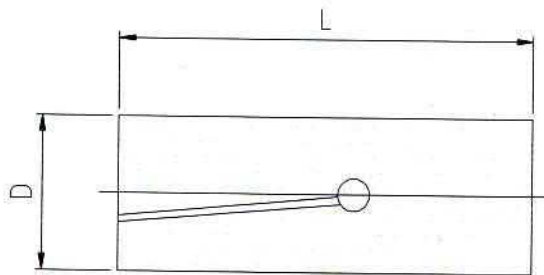
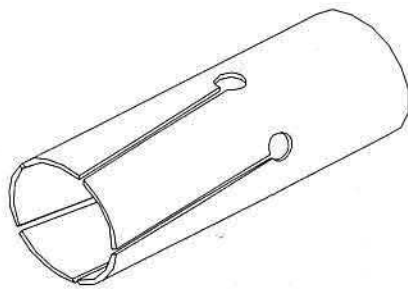
Bestell-Nr.	D	L	●
ABC 173	60	39	5,0 - 42,0
Andere Typen: auf Anfrage!	Other types: on request!	Autres types: sur demande!	

**DOPPELKONUS-SPANNZANGEN
FÜR TRAUB TNL 32**



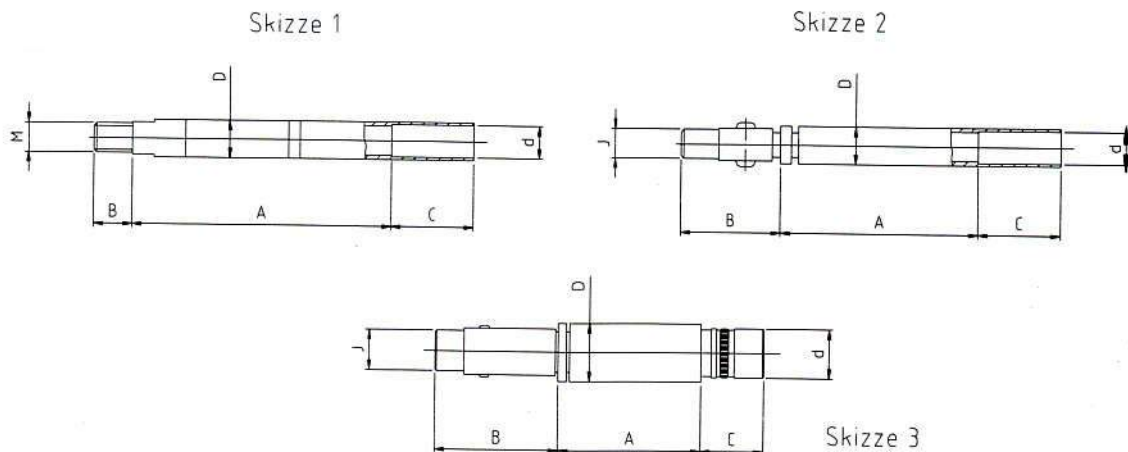
Bestell-Nr.	d	D	L	α	●	◆	■
DK 42	35	42	50	22,5°	8,0 - 32,0	8,0 - 28,0	8,0 - 23,0
Andere Typen: auf Anfrage! Other types: on request! Autres types: sur demande!							

SPANNHÜLSEN FÜR LADEMAGAZINE



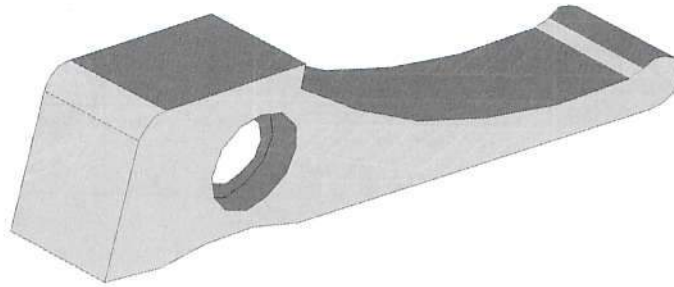
Bestell-Nr.	Kanal	D	d	L	●	STG
200 E	5 D	5	M4	40	1,5 - 4,5	0,1
203 E	15 D	15	11	40	3,0 - 13,0	0,5
208 E	7 D	7	M5	40	2,0 - 5,5	0,1
210 E	10 D	10	7	40	2,5 - 8,0	0,5
212 E	12 D	12	8	40	3,0 - 10,0	0,5
222 E	25 D	25	20	65	4,0 - 20,0	0,5
225 E	20 D	20	14	65	4,0 - 18,0	0,5
227 E	28 D	28	20	65	10,0 - 25,5	0,5
TURBO-Spannhülsen:						
SPHTS 25	25 D	25	20	90	10,0 - 20,0	0,5
SPHTS 30	30 D	30	20	90	10,0 - 25,0	0,5
SPHTS 32	32 D	32	20	90	10,0 - 27,0	0,5
SPHTS 34	34 D	34	20	90	10,0 - 29,0	0,5
SPHTS 36	36 D	36	20	90	10,0 - 31,0	0,5
SPHTS 38	38 D	38	20	90	10,0 - 33,0	0,5
SPHTS 40	40 D	40	20	90	10,0 - 35,0	0,5
SPHTS 42	42 D	42	20	90	10,0 - 37,0	0,5
SPHTS 50	50 D	50	20	90	20,0 - 45,0	0,5
SPHTS 60	60 D	60	20	90	35,0 - 55,0	0,5
SPHTS 63	63 D	63	20	90	50,0 - 58,0	0,5
SPHTS 65	65 D	65	20	90	50,0 - 60,0	0,5
SPHTS 80	80 D	80	20	90	50,0 - 75,0	0,5

SPANNHÜLSEN-LAGERUNGEN FÜR LADEMAGAZINE



Kanal	für Lademagazin	Skizze	D	A	B	C	J	d	M
5 D	Traub	1	5	56	7	12		4,5	4
7 D	Traub	1	7	59	7	15		6,5	5
10 D	Traub	2	10	45,5	24	18	7	9	
12 D	Traub	2	12	45,5	24	18	8	11	
10 D	Hagenuk	3	10	45,5	24	31	7	8	
12 D	Hagenuk	3	12	45,5	24	31	8	8	
15 D	Traub	3	15	50	24	31	11	12	
20 D	Traub	3	20	50	40	31	14	14	
25 D	Traub	3	25	50	40	31	20	20	

SPANNFINGER FÜR DREHAUTOMATEN



Maschine	Maschinentype	Bestell-Nr.
Index	DG - ON - OR	AA 1371
Index	12 - ER 16	A 33280
Index	25 - 18 - C19 - ER25	A 43280
Index	C 29	C 29591
Index	B 30 - 24	A 53283
Index	B 42 - B 60	A 73281
Traub	A 15 9 mm	630 030
Traub	A 25 - 15 10 mm	632 192
Traub	A 25 - TC 15 12 mm	616 112
Traub	A 26 - 36	632 202
Traub	A 42 - 60	630 950
Traub	T 30 - 42 - 60	632 521
Traub	TB 42 - 60 - TK - TF	614 194
Traub	TD 16 - 26 - 36	691 325
Spannfinger für Bechler, Gildemeister, Index-Steinhäuser, Strohm, Tornos: auf Anfrage, kurzfristig lieferbar ! Chuck levers for Bechler, Gildemeister, Index-Steinhäuser, Strohm, Tornos: on request, with short delivery period ! Doigts pour Bechler, Gildemeister, Index-Steinhäuser, Strohm, Tornos: sur demande, à bref délai !		

Otto Dieterle Spezialwerkzeuge GmbH

Predigerstr. 56
78628 Rottweil, Germany

Tel.: +49 (0) 741 / 9 42 05 - 0
Fax: +49 (0) 741 / 9 42 05 - 50
Email: info@dieterle-tools.com

www.dieterle-tools.com

