



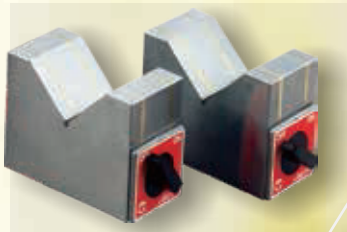
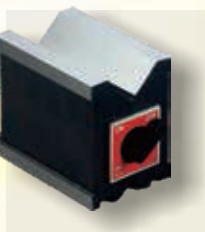
**EARTH-CHAIN**

**Power that works.**

# 磁性應用工具

**NO.15**

## MAGNETIC & PRECISION TOOLS








版權所有 翻印必究  
Copyright! All rights reserved!  
2018.08



(812) 335-59-35 info@sunttools.ru www.sunttools.ru

г. Санкт-Петербург, пр. Славы, 40 корпус 2

<p><b>SUPER LENGTH HYDRAULIC ARM MAGNETIC STAND</b>                      巨型萬向油壓磁性表座</p>  <p>ECE-300ALL P1</p>	<p><b>UNIVERSAL ARM MAGNETIC STAND</b>                      萬向磁性表座</p>  <p>ECE-330AL P2</p>	<p><b>UNIVERSAL ARM MAGNETIC STAND</b>                      萬向磁性表座</p>  <p>ECE-340 P3</p>
<p><b>HIGH PRECISION MAGNETIC STAND</b>                      高精密微調磁性座</p>  <p>ECE-01A P4</p>	<p><b>HIGH PRECISION MAGNETIC STAND</b>                      高精密微調磁性座</p>  <p>ECE-02 P4</p>	<p><b>MINI TYPE HIGH PRECISION MAGNETIC STAND</b>                      迷你型高精密微調磁性座</p>  <p>ECE-02A P4</p>
<p><b>MINI TYPE HIGH PRECISION MAGNETIC STAND</b>                      迷你型高精密微調磁性座</p>  <p>ECE-02B P4</p>	<p><b>MAGNETIC BASE SERIES</b>                      磁性座系列</p>  <p>ECE-302BA P5</p>	<p><b>MAGNETIC BASE SERIES</b>                      磁性座系列</p>  <p>ECE-304 P6</p>
<p><b>MAGNETIC BASE SERIES</b>                      磁性座系列</p>  <p>ECE-306H1 P7</p>	<p><b>UNIVERSAL ARM CHIP-SHIELD</b>                      萬向擋屑板</p>  <p>ECSP-310 P8</p>	<p><b>INDICATOR STAND</b>                      磁性表座</p>  <p>ECE-302BL P8</p>
<p><b>MIST COOLANT SYSTEM</b>                      噴霧器系列</p>  <p>ECE-310CS P9</p>	<p><b>MAGNETIC CLAMPING BLOCK</b>                      小型磁力工作台</p>  <p>ECE-612 P10</p>	<p><b>MAGNETIC SQUARE &amp; V-BLOCK</b>                      磁力方型座</p>  <p>ECE-100 P11</p>
<p><b>MAGNETIC V-BLOCK</b>                      磁力V型座</p>  <p>ECE-208 P11</p>	<p><b>MAGNETIC HOLDER</b>                      磁力吸塊</p>  <p>EMH-S P12</p>	<p><b>PERMANENT LIFTING MAGNET (CAM TYPE)</b>                      凸輪式永久磁力吊盤</p>  <p>EL P13</p>

**PERMANENT MAGNETIC LIFTER (HANDLE TYPE)**  
手拉式永久磁力吊盤



ELH-10S

P13

**DEMAGNETIZER**  
手持型脫磁器



EDH-123

P14

**DEMAGNETIZER**  
平面型脫磁器



EDB-180

P14

**STANDARD TYPE DEMAGNETIZER**  
標準型脫磁器



EDS-200

P15

**POWERFUL TYPE DEMAGNETIZER**  
強力型脫磁器



EDB-280

P15

**TUNNEL TYPE DEMAGNETIZER**  
隧道型脫磁器



EHD-1015

P16

**SUPER POWERFUL TYPE DEMAGNETIZER**  
超強力型脫磁器



EHD-420

P16

**SUPER POWERFUL TYPE DEMAGNETIZER**  
超強力型脫磁器



EDB-500

P17

**PEN TYPE DEMAGNETIZER**  
筆型脫磁器



EHD-260

P17

**BAT TYPE DEMAGNETIZER**  
棒型脫磁器



EHDB-210

P18

**CUTTING TOOL DEMAGNETIZER**  
圓型脫磁器



HDO-40

P18

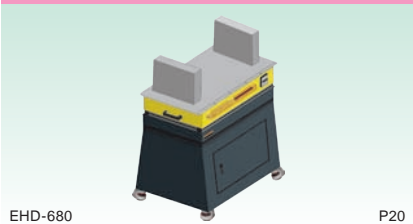
**PLATE TYPE SUPER POWERFUL DEMAGNETIZER**  
強力型脫磁器



EHD-620

P19

**U TYPE SUPER POWERFUL DEMAGNETIZER**  
超強力型脫磁器



EHD-680

P20

**POWERFUL TYPE DEMAGNETIZER**  
強力型脫磁器



EHD-380

P21

**LED LIGHTING LAMP**  
LED燈座系列



LED-L95, LED-M95

P22

**LED LIGHTING LAMP**  
LED燈座系列



LED-SS20 (Spot Type) 盞磁座

P22

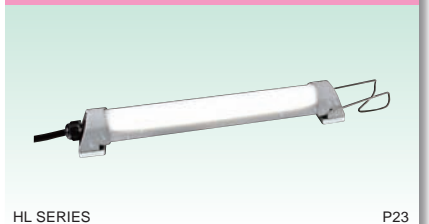
**LED LIGHTING LAMP**  
LED燈座系列



LED-L60 (Spot Type) 盞磁座

P22

**HL SERIES WATER-PROOF LED LAMP**  
HL系列防水式LED燈



HL SERIES

P23

**SUPER LENGTH HYDRAULIC ARM MAGNETIC STAND**  
**巨型萬向油壓磁性表座**

ECE-300ALL



**Feature:**

- Super length, suitable for measuring on big machine.
- Maximum length reaches to 667 mm.
- Made by aluminum alloy, light and easy to operate.
- Principle of hydraulic, stable and accurate.

**特點:**

- 超大尺寸，適用於大型機械及大型工件之測量校正。
- 延伸長度可達667mm。
- 本體結構全部採用鋁合金製造，重量輕操作方便。
- 油壓結構、穩固、精確。

Model 型號	Holding Power 磁力	Arm Length 臂長	Base Dimension 磁座尺寸			Net Weight 重量
			L	W	H	
ECE-300ALL	160 kgf	667 mm	120 mm	50 mm	55 mm	3.3 kg

**UNIVERSAL ARM MAGNETIC STAND**  
**萬向磁性表座**

ECE-330AL



ECE-330A



ECE-330B



ECE-330BS



Precision Type Mechanical Arm 機械式精密型

ECE-300AL



ECE-300A



ECE-300B



ECE-300BS



Precision Type Hydraulic Arm 油壓式精密型

Model 型號	Holding Power 磁力	Arm Length 臂長	Base Dimension 磁座尺寸			Net Weight 重量
			L	W	H	
ECE-330AL	100 kgf	426 mm	80 mm	50 mm	55 mm	2.2 kg
ECE-330A	100 kgf	345 mm	80 mm	50 mm	55 mm	2.0 kg
ECE-330B	80 kgf	345 mm	60 mm	50 mm	55 mm	1.7 kg
ECE-330BS	80 kgf	278 mm	60 mm	50 mm	55 mm	1.5 kg
ECE-300AL	100 kgf	434 mm	80 mm	50 mm	55 mm	1.9 kg
ECE-300A	100 kgf	336 mm	80 mm	50 mm	55 mm	1.9 kg
ECE-300B	80 kgf	336 mm	60 mm	50 mm	55 mm	1.6 kg
ECE-300BS	80 kgf	257 mm	60 mm	50 mm	55 mm	1.4 kg

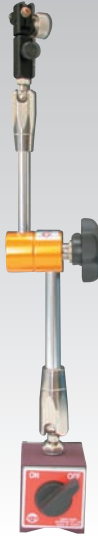
**UNIVERSAL ARM MAGNETIC STAND**  
**萬向磁性表座**

ECE-340



Standard Type Mechanical Arm  
機械式標準型

ECE-310



Economic Type Mechanical Arm  
機械式經濟型

ECE-320



Mini Type Mechanical Arm  
機械式迷你型

Model 型號	Holding Power 磁力	Arm Length 臂長	Base Dimension 磁座尺寸			Net Weight 重量
			L	W	H	
ECE-340	80 kgf	335 mm	60 mm	50 mm	55 mm	1.6 kg
ECE-310	80 kgf	347 mm	60 mm	50 mm	55 mm	1.4 kg
ECE-320	80 kgf	300 mm	60 mm	50 mm	55 mm	1.3 kg

ECE-400



ECE-500



ECE-550



ECE-600



Mini Type 萬向磁性座 (迷你型)

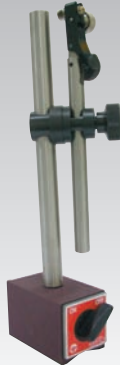
25.4 mm = 1"

mm

Model 型號	Holding Power 磁力	Tapped Hole 孔徑	Arm Length 臂長	Base Dimension 磁座尺寸			Net Weight 重量
				L	W	H	
ECE-400	35 kgf	M8 x 1.25	178	49	42	50	0.8 kg
ECE-500	17 kgf	M8 x 1.25	178	30	30	30	0.4 kg
ECE-550	30 kgf	M8 x 1.25	178	Ø40 x 30			0.4 kg
ECE-600	25 kgf	M8 x 1.25	178	35	30	35	0.4 kg

**High Precision Magnetic Stand Series**  
**高精密微調磁性座系列**

ECE-01A



HIGH PRECISION MAGNETIC STAND  
高精密微調磁性座

ECE-02



HIGH PRECISION MAGNETIC STAND  
高精密微調磁性座



- With new type micro-adjustment device, it's more precise and stable.
- The main and sub poles are made of stainless steel material.
- 新型鳩尾微調裝置(更精確、穩定性更高)。
- 主、副支柱特別使用不導磁的不銹鋼材質。

ECE-02A



MINI TYPE HIGH PRECISION MAGNETIC STAND  
迷你型高精密微調磁性座

ECE-02B



MINI TYPE HIGH PRECISION MAGNETIC STAND  
迷你型高精密微調磁性座

25.4 mm = 1"

mm

Model 型號	Holding Power 磁力	Tapped Hole 孔徑	Main Pole 主柱	Sub Pole 支柱	Base Dimension 磁座尺寸			Net Weight 重量
					L	W	H	
ECE-01A	100 kgf	M10 × 1.5	φ18×240	φ14×217 含微調	80	50	55	2.3 kg
ECE-02	80 kgf	M8 × 1.25	φ14×178	φ11×178 含微調	60	50	55	1.5 kg
ECE-02A	35 kgf	M8 × 1.25	φ14×178	φ11×178 含微調	48	40	49	1.2 kg
ECE-02B	30 kgf	M8 × 1.25	φ14×178	φ11×178 含微調	φ40×30			0.8 kg

**MAGNETIC BASE SERIES**  
**磁性座系列**

ECE-302BA



MICRO ADJUSTMENT  
 微調型磁性座

ECE-314



FLEXIBLE ARM  
 彎曲型磁性座

ECE-302B



Dia clamp hole  
 夾持孔徑  
 4.5/6.5 or 6.5/8

STANDARD TYPE  
 標準型磁性座

ECE-302BV



Dia clamp hole  
 夾持孔徑  
 4.5/6.5 or 6.5/8

ADJUSTABLE TYPE  
 調整型磁性座

25.4 mm = 1"

mm

Model 型號	Holding Power 磁力	Main Pole 支柱		Sub Pole		Base Dimension 磁座尺寸			Net Weight 重量
		Dia 直徑	L 長	Dia 直徑	L 長	L	W	H	
ECE-302BA	80 kgf	12	176	10	230	60	50	55	1.70 kg
ECE-314	80 kgf	--	315	--	--	60	50	55	1.60 kg
ECE-302B	80 kgf	12	176	10	165	60	50	55	1.60 kg
ECE-302BV	80 kgf	12	176	10	150	60	50	55	1.62 kg



**MAGNETIC BASE SERIES**  
**磁性座系列**

ECE-304



WORKING LAMP  
 工作燈座

ECE-312



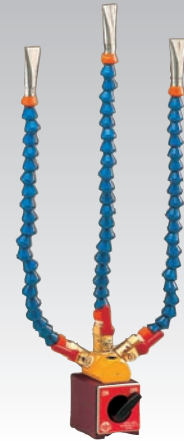
WHEEL DRESSER  
 (Diamond pen not included)  
 砂輪修整磁性座  
 (不附鑽石筆)

ECE-303N2



COOLING HOSE  
 噴水管磁性座

ECE-303N3



COOLING HOSE  
 噴水管磁性座

25.4 mm = 1"

mm

Model 型號	Holding Power 磁力	Main Pole 支柱		Bulb Accept 電源	Base Dimension 磁座尺寸			Net Weight 重量
		Dia 直徑	L 長		L	W	H	
ECE-304	80 kgf	20	460	AC110/220V	60	50	55	1.67 kg
ECE-312	80 kgf	--	--	--	60	50	55	1.10 kg
ECE-303N2	80 kgf	16	365	--	60	50	55	1.60 kg
ECE-303N3	80 kgf	16	365	--	60	50	55	1.62 kg

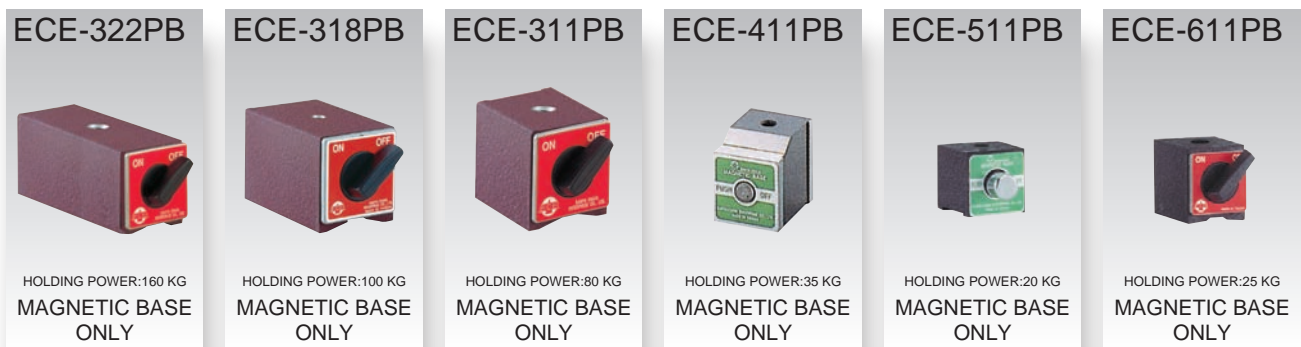
**MAGNETIC BASE SERIES**  
**磁性座系列**



COOLING METAL HOSE 金屬噴水磁性座

25.4 mm = 1" mm

Model 型號	Holding Power 磁力	Main Pole 水管		Base Dimension 磁座尺寸			Net Weight 重量
		Dia 直徑	L 長	L	W	H	
ECE-306H1	80 kgf	10	375	60	50	55	1.40 kg
ECE-306H2	80 kgf	10	375	60	50	55	1.60 kg
ECE-306H3	80 kgf	10	375	60	50	55	1.80 kg



HOLDING POWER:160 KG  
MAGNETIC BASE ONLY

HOLDING POWER:100 KG  
MAGNETIC BASE ONLY

HOLDING POWER:80 KG  
MAGNETIC BASE ONLY

HOLDING POWER:35 KG  
MAGNETIC BASE ONLY

HOLDING POWER:20 KG  
MAGNETIC BASE ONLY

HOLDING POWER:25 KG  
MAGNETIC BASE ONLY

25.4 mm = 1" mm

Model 型號	Holding Power 磁力	Tapped Hole 孔徑	Base Dimension 磁座尺寸			Net Weight 重量
			L	W	H	
ECE-322PB	160 kgf	M8 x 1.25	120	50	55	2.00 kg
ECE-318PB	100 kgf	M8 x 1.25	80	50	55	1.40 kg
ECE-311PB	80 kgf	M8 x 1.25	60	50	55	1.00 kg
ECE-411PB	35 kgf	M8 x 1.25	49	41	51	0.61 kg
ECE-511PB	20 kgf	M8 x 1.25	30	30	30	0.2 kg
ECE-611PB	25 kgf	M8 x 1.25	35	30	35	0.2 kg

**UNIVERSAL ARM CHIP-SHIELD**  
**萬向擋屑板**



ECE-CSP310

**MAGNETIC BASE**  
Dimension: 60x50x55mm  
Holding power: 80kgf

**ARM**  
Lenght:285mm  
**SHIELD**  
Dimension:380X300mm

**使用範例**  
**EXAMPLE IN USE**

On milling machine 銑床



On lathe machine 車床



**Feature:**

- Universal arm can be set up any positions easily.
- For fend metal chip shoot out while a metal cutting process on the machine, achieve as a protection of worker.
- With a file, can be clip working drawing, convenient for metal cutting processes.

**Applications:**

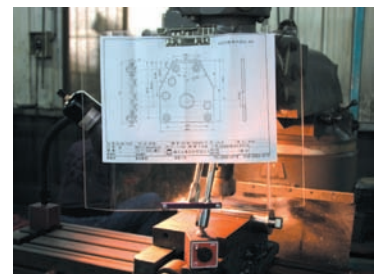
- Suitable for metal cutting processes on machines, such as milling machine, drilling machine, lathe machine ..... etc metal cutting machinery.

**特點:**

- 萬向支臂，可固定於任何角度，使用方便迅速。
- 在進行金屬加工時，可擋住及防止金屬屑片射出致傷及工作者身體，達到保護作用。
- 附有一文件夾，可夾持工作圖，一舉數得。

**適用範圍:**

- 適用於金屬加工之操作，如銑床，鑽床，車床...等金屬加工機



**INDICATOR STAND 磁性表座**

ECE-302BLD



ECE-302BU



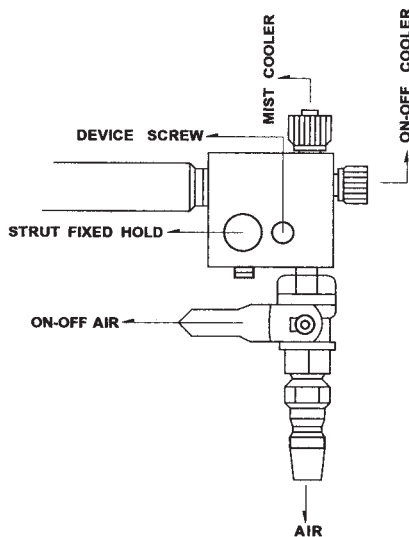
mm

Model 型號	Holding Power 磁力	Main Pole 支柱		Sub Pole		Base Dimension 磁座尺寸			Net Weight 重量
		Dia 直徑	L 長	Dia 直徑	L 長	L	W	H	
ECE-302BLD	100 kgf	16	215	14	165	80	50	55	2.2 kg
ECE-302BU	100 kgf	12	220	10	165	80	50	55	1.9 kg

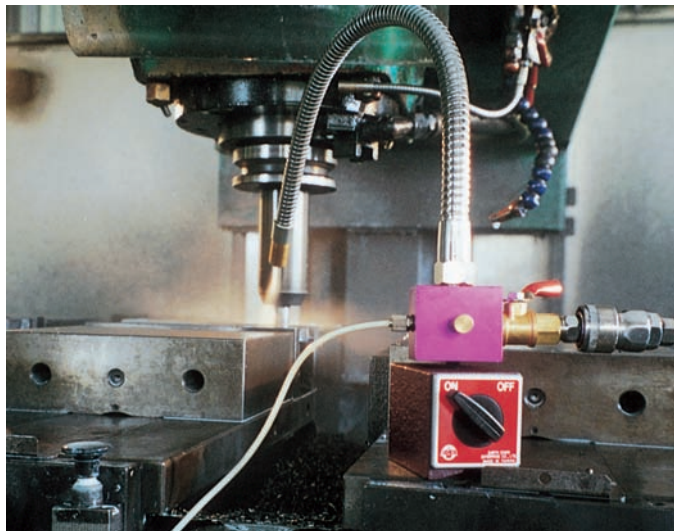
**MIST COOLANT SYSTEM**  
**噴霧器系列**



Drawing



Working Example 工作範例



**Feature:**

- Formulated for smooth micro-finishes even with new alloys and exotic metals.

**特點:**

- 噴霧力強，能使工件迅速冷卻及鐵屑迅速排除。

mm

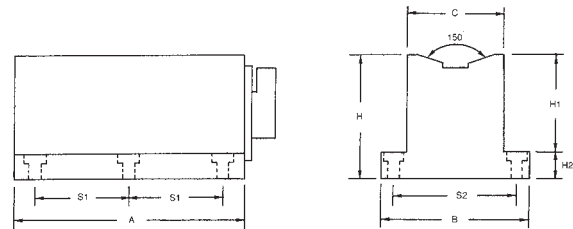
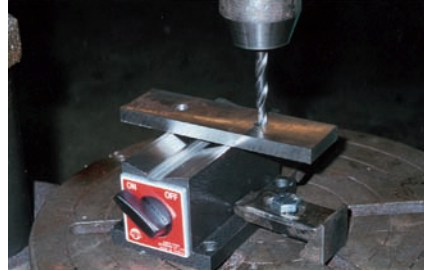
Model 型號	Magnetic Base Holding Power 磁力吸力	Arm Length 臂長	Base Dimension 磁座尺寸			Net Weight 重量
			L	W	H	
ECE-310CS	80 kgf	480	60	50	55	1.80 kg
ECE-323B	80 kgf	500	60	50	55	1.65 kg
ECE-323L	-----	500	--	--	--	0.65 kg
ECE-323	-----	250	--	--	--	0.45 kg

**MAGNETIC CLAMPING BLOCK**  
**小型磁力工作台**

ECE-612



Working Example 工作範例



**Application:**

- Suitable for setting on the drilling machine and milling machine to hold work-piece of round steel bar or steel.

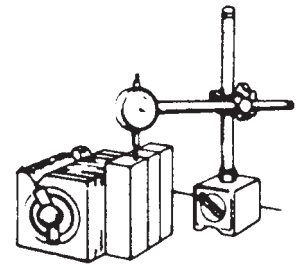
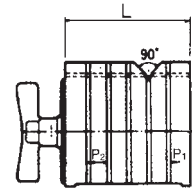
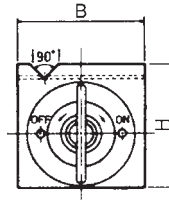
**用途:**

- 適用於鑽床、銑床之鑽孔及輕切削，可夾持圓型鋼材及鋼板等，操作迅速、簡便。

Model 型號	Holding Power 磁力		Dimension 尺寸								Net Weight 重量
	V-Face V型面	Surface 平面	A	B	C	H	H1	H2	S1	S2	
ECE-612	110 kgf	160 kgf	118	76	50	62	50	12	48	62	2.5 kg

**MAGNETIC SQUARE & V-BLOCK 磁力方型座**

ECE-100 ECE-150

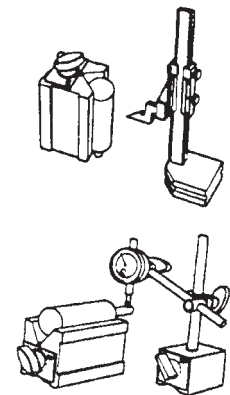
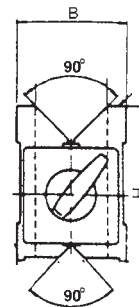
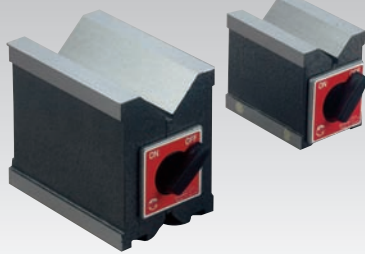


25.4 mm = 1" mm

Model 型號	Holding Power 磁力		Dimension 尺寸			Pole Pitch 磁距		Net Weight 重量
	V-Face V型面	Surface 平面	B	L	H	P1	P2	
ECE-100	28 kgf	40 kgf	100	100	100	5	11	6.5 kg
ECE-150	50 kgf	140 kgf	150	150	150	6	18	24 kg

**MAGNETIC V-BLOCK 磁力V型座**

ECE-212 ECE-208

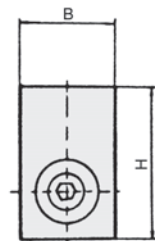
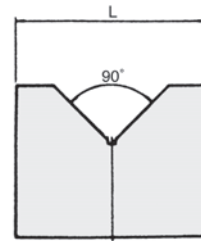
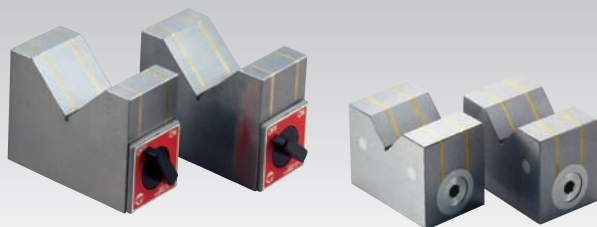


25.4 mm = 1" mm

Model 型號	Holding Power 磁力		Dimension 尺寸			Net Weight 重量
	V-Face V型面	Surface 平面	B	H	Length	
ECE-208	55 kgf	70 kgf	56	72	80	3 kg
ECE-212	90 kgf	110 kgf	75	100	115	5.5 kg

**MAGNETIC V-BLOCK 磁力V型座**

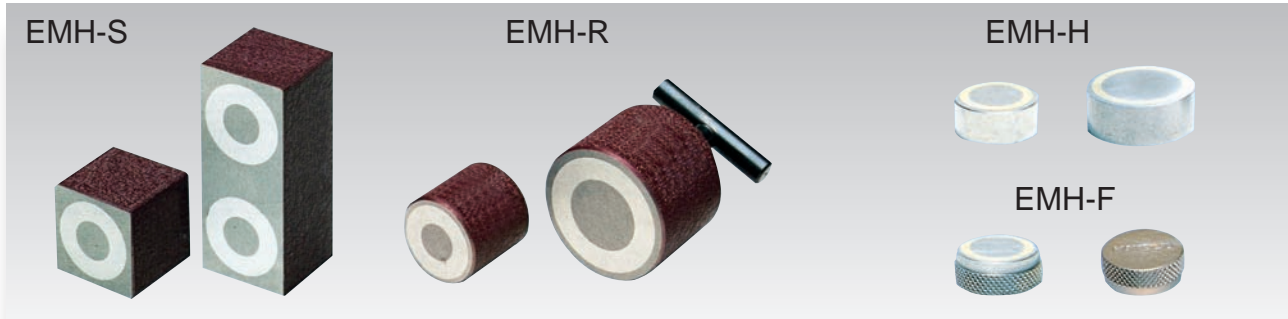
ECE-510 ECE-507



\*2 Pcs 一組 2 Pcs/Set 25.4 mm = 1" mm

Model 型號	Holding Power 磁力	Applicable Diameter 直徑範圍	Dimension 尺寸			Net Weight 重量
			B	L	H	
ECE-507	15 kgf	50	40	70	50	1 kg x 2
ECE-510	20 kgf	80	50	100	80	3 kg x 2

**MAGNETIC HOLDER 磁力吸塊**



25.4 mm = 1" mm

Model 型號	Holding Power 磁力	Dimension 尺寸	Net Weight 重量
EMH-26S	10 kgf	26 × 26 × 25	0.11 kg
EMH-60S	20 kgf	60 × 26 × 25	0.25 kg
EMH-30R	15 kgf	Ø30 × 25	0.11 kg
EMH-40R	30 kgf	Ø40 × 30	0.24 kg
EMH-50R	50 kgf	Ø50 × 40	0.50 kg
EMH-10H	3 kgf	Ø10 × 8	0.005 kg
EMH-18H	5 kgf	Ø18 × 8	0.016 kg
EMH-25H	9 kgf	Ø25 × 10	0.04 kg
EMH-10F	3 kgf	Ø10 × 8	0.005 kg
EMH-18F	5 kgf	Ø18 × 8	0.016 kg
EMH-25F	9 kgf	Ø25 × 10	0.04 kg

\*Other specification are request to meet for your need.

**PERMANENT LIFTING MAGNET (CAM TYPE)**  
**凸輪式永久磁力吊盤**

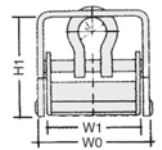
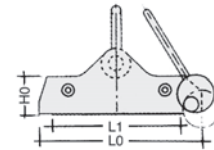
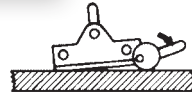
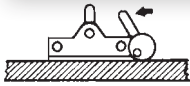


**Feature:**

- Most applicable for transporting of black sheet iron, flat iron products raw materials; as well as the mouldings for mechanical parts, pressing machine and PVC injection etc. and flat semi-products.

**特點:**

- 凸輪式永久磁力吊盤應用於黑皮鐵板平坦的鐵製品等素材的搬運以及機械零件、壓榨機械模、塑膠成型用模等具有平面的半成品之搬運。



mm

Model 型號	Capacity 吊重能力	L <sub>1</sub>	L <sub>0</sub>	W <sub>1</sub>	W <sub>0</sub>	H <sub>1</sub>	H <sub>0</sub>	d	Net Weight 重量
EL-100	1000 kgf	290	350	204	210	150	60	50	25 kg
EL-200	2000 kgf	290	350	330	336	150	60	50	35 kg

**PERMANENT MAGNETIC LIFTER (HANDLE TYPE)**  
**手拉式永久磁力吊盤**



**Feature:**

- Suitable for part processes or move workpiece, especially difficult to fetch the work with hands. Can be more convenient and efficiency.

**特點:**

- 手拉式永久磁性吊盤應用於零件加工時或搬運工件之取放作業，尤以稍具重量而不易以手取放之工件。它將可使工作更順手、提高工作效率。

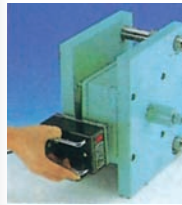
mm

Model 型號	Capacity 吊重能力	L 長	W 寬	H 高	Net Weight 重量
ELH-10S	160 kgf	120	50	55	2.0 kg
ELH-6S	80 kgf	60	50	55	1.15 kg



**DEMAGNETIZER**  
**手持型脫磁器**

EDH-123

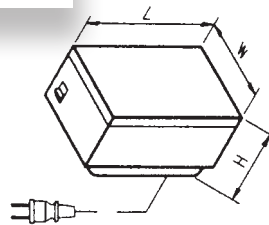


**Feature:**

- Suitable for big machines, steel plates, molds, etc. for handy way demagnetization.
- Small physical volume; light weight; easy to carry.
- Automatic Temperature Protection: When temperature reaches to the setting point, the power will be off automatically, and then it will restart to work when temperature comes down.
- After operation by 60 mins, it must be turned off for 10 mins.

**特點:**

- 適用大型機械、鋼板、模具等工具，手持移動方式脫磁使用。
- 體積小、重量輕、攜帶方便。
- 自動溫度保護、溫度達設定時，自動切斷電源，待溫度下降後，自然恢復使用。



mm

Model 型號	Input Voltage 電源	Current 電流	Duty Cycle 使用率	Dimension 尺寸			Net Weight 重量
				L 長	W 寬	H 高	
EDH-123	AC 110V AC 220V	1.0A 0.5A	自動溫度保護脫磁 60分停止10分	123	83	83	1.8 kg

**DEMAGNETIZER**  
**平面型脫磁器**

EDB-180

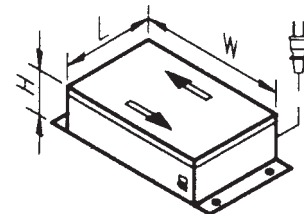


**Feature:**

- Suitable for general component spare parts, attachments, tools, etc. for fixed way demagnetization.
- After operation for 20 mins, it must be turned off for 20 mins.
- Automatic Temperature Protection: When temperature reaches to the setting point, the power will be off automatically, and then it will restart to work when temperature comes down.

**特點:**

- 適用一般零組件、配件、工具等工件，固定方式脫磁使用。
- 使用20分鐘後，須休息20分鐘方可繼續使用。
- 自動溫度保護、溫度達設定時，自動切斷電源，待溫度下降後，自然恢復使用。



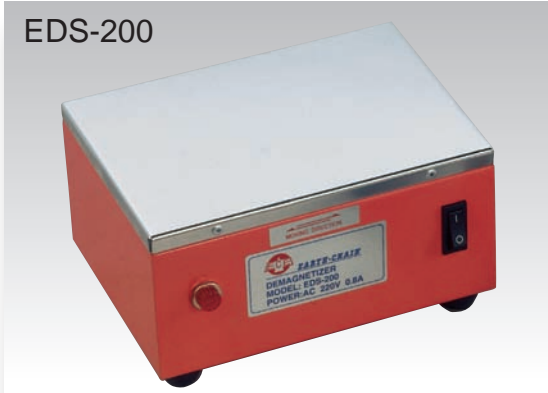
mm

Model 型號	Input Voltage 電源	Current 電流	Duty Cycle 使用率	Dimension 尺寸			Net Weight 重量
				L 長	W 寬	H 高	
EDB-180	AC 110V AC 220V	2.6A 1.3A	自動溫度保護脫磁 20分停止20分	127	180	90	4 kg

### STANDARD TYPE DEMAGNETIZER

#### 標準型脫磁器

EDS-200

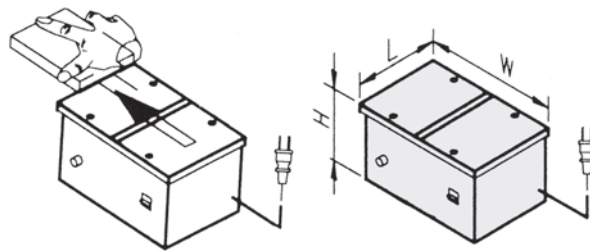


**Feature:**

- Suitable for general component spare parts, attachments, tools...etc. for fixed way demagnetization.
- Suitable for longtime use; be able to use continuously for 24 hours.
- With the design of double coils inside to avoid heat build up.

**特點:**

- 適用零組件、配件、工具等工件，固定方式脫磁使用。
- 可連續24小時長時間使用。
- 內部雙線圈設計，不產生發熱情形。



mm

Model 型號	Input Voltage 電源	Current 電流	Duty Cycle 使用率	Dimension 尺寸			Net Weight 重量
				L長	W寬	H高	
EDS-200	AC 110V AC 220V	2.3A 1.2A	連續使用	150	200	100	8.5 kg

### POWERFUL TYPE DEMAGNETIZER

#### 強力型脫磁器

EDB-280

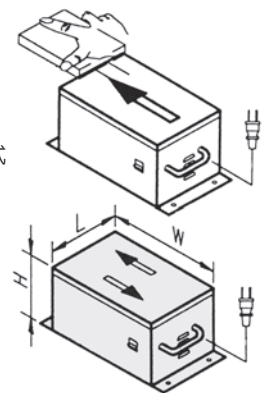


**Feature:**

- Suitable for general component spare parts, attachments, tools...etc. for fixed way demagnetization.
- Suitable for longtime use; be able to use continuously for 24 hours.
- Can be adapted for delivery belts to proceed automatic demagnetization.
- Use is wide range; very effective.
- Attached a fan inside for removing heat.
- Special specifications will be made subject to customers' requirements.

**特點:**

- 適用零組件、配件、工具等工件，固定方式脫磁使用。
- 可連續24小時長時間使用。
- 可配合輸送帶作自動化脫流程工作。
- 脫磁面積大，脫磁效果強。
- 內附散熱風扇。
- 特殊規格，可依客戶要求訂製。



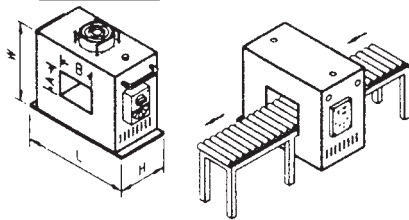
mm

Model 型號	Input Voltage 電源	Current 電流	Duty Cycle 使用率	Dimension 尺寸			Net Weight 重量
				L長	W寬	H高	
EDB-280	AC 110V AC 220V	6.0A 3.0A	連續使用	200	280	130	15 kg

### TUNNEL TYPE DEMAGNETIZER

#### 隧道型脫磁器

EHD-1015  
EHD-1525  
EHD-2545



**Feature:**

- Super efficacy in demagnetizing, suitable for many kinds of metals.
- Merely using tools to pass through or move into a tunnel will cause a good demagnetizing effect.
- Suitable for planned automatic process; be adapted for delivery belts to proceed in order to increase productivity.
- Suitable for longtime use; be able use continuously for 24 hours.
- Suitable for large production of component spare parts, attachments, tools...etc.
- Suitable for hand manual tools, etc. for filling magnetism.
- Attached a fan inside for dissipating heat.
- Special specifications will be made subject to customer's requirements.

**特 點:**

- 脫磁能力超強，各種金屬材質皆能有效脫磁，特別是不鏽鋼材質有絕對脫磁效果。
- 工件只要從隧道內孔通過或移動，就有強力效果。
- 適合規劃自動化流程，配合非導磁體輸送帶工作，提高生產力。
- 可連續24小時長時間使用。
- 適用零組件、配件、工具等產品，量產時使用。
- 適合作手工具等充磁用。
- 內附散熱風扇。
- 特殊規格可依客戶要求訂製。

mm

Model 型號	Input Voltage 電源	Current 電流	Duty Cycle 使用率	Dimension 尺寸			GATE		Net Weight 重量
				L長	W寬	H高	A	B	
EHD-1015	AC 220/380V (single phase)	5A	連續使用	370	370	200	100	150	31 kg
EHD-1525	AC 220/380V (single phase)	12A	連續使用	470	370	200	150	250	52 kg
EHD-2545	AC 220/380V (single phase)	32A / 18A	連續使用	700	500	200	250	450	80 kg

### SUPER POWERFUL TYPE DEMAGNETIZER

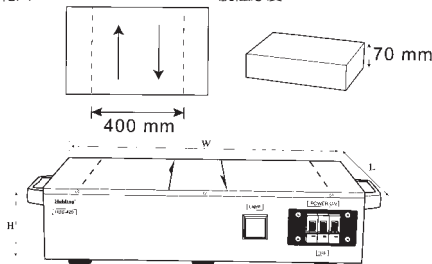
#### 超強力型脫磁器

EHD-420



RANGE OF DEMAGNETIZE  
脫磁範圍

THICKNESS OF DEMAGNETIZE  
脫磁厚度



**Feature:**

- Suitable for large production of component spare parts, attachments, tools, etc. for fixed way demagnetization.
- Range of demagnetize: 400mm (16")
- Max. thickness of workpiece can be demagnetized: 70mm.
- Super powerful demagnetization for materials with strong retentivity such as high speed steel, bearing steel, nickel chromium steel, spring steel, etc. and also suitable for magnetic steel hard to be demagnetized.
- Thick workpiece can be demagnetized effectively by passing its front and rear sides over the demagnetizer.
- Customization is welcome.

**特 點:**

- 適用零組件、配件、大型模具、大型鋼板，固定方式脫磁使用。
- 脫磁有效範圍：400mm (16")。
- 脫磁工件有效厚度可達70mm。
- 適用較難脫磁材質，如高碳鋼、軸承鋼、鍍路鋼、彈簧鋼、模具鋼等保磁力強的材質，脫磁困難的磁鋼，也可以輕易地發揮脫磁效果。
- 可連續通過使用。
- 特殊規格，可依客戶要求訂製。

mm

Model 型號	Input Voltage 電源	Current 電流	Duty Cycle 使用率	Dimension 尺寸			Net Weight 重量
				L長	W寬	H高	
EHD-420	AC220V / 380V (3 Phase)	6A / 4A	100% 連續使用	335	585	135	40 kg

### SUPER POWERFUL TYPE DEMAGNETIZER

#### 超強力型脫磁器

EDB-500

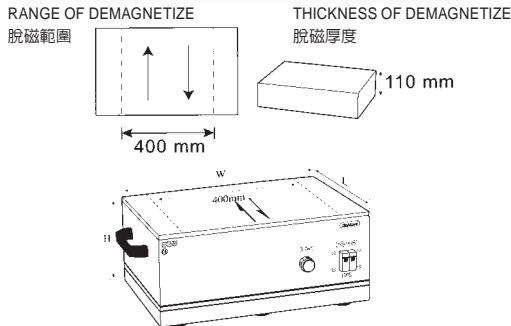


**Feature:**

- Suitable for large production of component spare parts, attachments, tools, etc. for fixed way demagnetization.
- Range of demagnetize: 400mm (16")
- Max. thickness of workpiece can be demagnetized: 110mm.
- Super powerful demagnetization for materials with strong retentivity such as high speed steel, bearing steel, nickel chromium steel, spring steel, etc. also suitable for magnetic steel hard to be demagnetized.
- Customization is welcome.

**特點:**

- 適用零組件、配件、大型模具、大型鋼板，固定方式脫磁使用。
- 脫磁有效範圍：400mm(16")。
- 脫磁工件有效厚度可達110mm。
- 可連續通過使用。
- 適合較難脫磁材質，如高碳鋼、軸承鋼、鍍鉻鋼、彈簧鋼、模具鋼等保磁力強的材質，脫磁困難的磁鋼，也可以輕易地發揮脫磁效果。
- 特殊規格可依客戶要求訂製。



mm

Model 型號	Input Voltage 電源	Current 電流	Duty Cycle 使用率	Dimension 尺寸			Net Weight 重量
				L長	W寬	H高	
EDB-500	AC220V / 380V (3 Phase)	10A / 6A	100% 連續使用	335	585	285	69.5 kg

### PEN TYPE DEMAGNETIZER

#### 筆型脫磁器

EHD-260

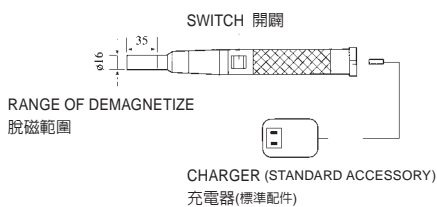


**Feature:**

- Designed of revolved magnetic field for demagnetize and made by "Rare Earth" permanent magnet with high magnetism.
- Small dimension, high function, wide range of applications, and powerful demagnetization.
- Portable and rechargeable pen type, suitable in any condition for demagnetize.

**特點:**

- 採用稀土類，高磁性有久磁鐵，旋轉磁場脫磁方式設計，體積小、性能高，應用廣、脫磁能力強。
- 採用充電電池筆型攜帶式，輕巧方便，能適合任何場所消磁工作。

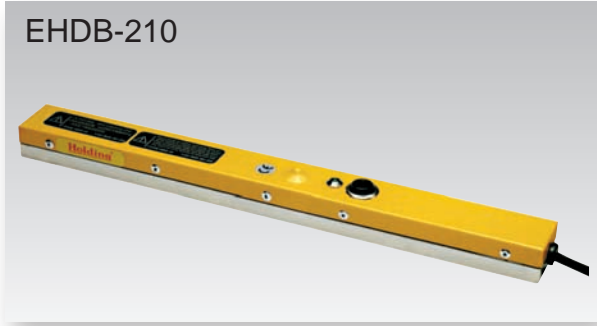


mm

Model 型號	Dimension 尺寸	RANGE OF DEMAGNETIZE 脫磁範圍	CHARGE TIME 充電時間	CHARGER 充電器	TEMPERATURE OF OPERATION AREA 工作周圍溫度	Net Weight 重量
EHD-260	Ø30x260 mm	Ø16x35 mm	15 Hours 15小時	AC110/220V(50/60HZ) DC3.7V 250mA	Under 80°C 80°C 以下	340 g

**BAT TYPE DEMAGNETIZER**  
**棒型脫磁器**

**EHDB-210**

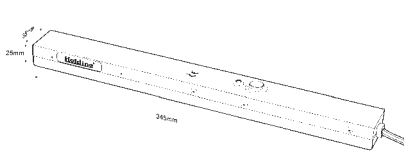


**Feature:**

- Suitable for demagnetizing stamping metalwork, ejection mold, etc.
- Portable type for demagnetizing a narrow part of large steel plate.
- Can demagnetize the mold on machine directly to reduce damages by chips while stamping metalwork continuously.
- Turn it OFF when the demagnetizer is more than 100mm away from the demagnetizing workpiece.
- Working rate: 20%ED (operating for 1 minute and pausing for 4 minutes).

**特點:**

- 金屬沖壓模具，塑膠成型模具等脫磁。
- 狹小空間內部，攜帶式手持脫磁。
- 直接深入狹縫死角，無須拆卸模具於機器上直接脫磁。
- 連續沖壓模具減少因磁場吸附鐵屑而損傷模具。



mm

Model 型號	Input Voltage 電源	Current 電流	Duty Cycle 使用率	Dimension 尺寸			Net Weight 重量
				L長	W寬	H高	
EHDB-210	AC 110V / 220V (Single Phase)	1.2A / 0.6A	20% 使用1分鐘 停止4分鐘	345	35	25	1 kg

**CUTTING TOOL DEMAGNETIZER**  
**圓型脫磁器**

**HDO-40**

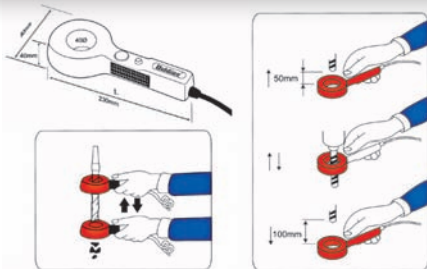


**Feature:**

- Handle type, easy and convenient to operate.
- Suitable for demagnetized cutting tools such as drill, tap, end mill and rod material...etc.
- Can be demagnetized the cutting tool on machine directly.
- Working rate : 20% ED (operating for 1 minute and pausing for 4 minutes).

**特點:**

- 手持圓型脫磁器。
- 機器上不須拆卸切削刀具可直接脫磁作業，連因磁場而附著於刀上細粉都可被剝落除去。
- 棒型材料、鑽頭、切削工具、工具、噴嘴等，滑動穿入脫磁。
- 脫磁面積大，脫磁效果強。
- 內附散熱風扇。
- 特殊規格可依客戶要求訂製。



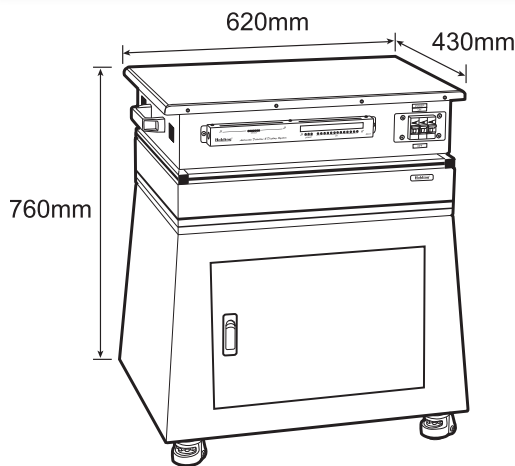
mm

Model 型號	Input Voltage 電源	Current 電流	Duty Cycle 使用率	Demagnetizing Range 脫磁範圍	Net Weight 重量
HDO-40	AC 110V AC 220V	1.0A 0.5A	自動溫度保護 脫磁1分鐘，停止4分鐘	Ø39 mm	0.9 kg

### PLATE TYPE SUPER POWERFUL DEMAGNETIZER

#### 強力型脫磁器

EHD-620



**Feature:**

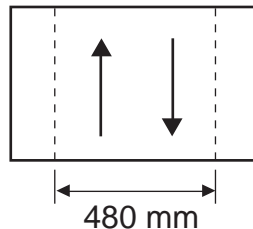
- Suitable for large production of component spare parts, attachments, tools, etc. for fixed way demagnetization.
- Range of demagnetize: 480mm.
- Max. thickness of workpiece can be demagnetized: 110mm
- Super powerful demagnetization for materials with strong retentivity such as high speed steel, bearing steel, nickel chromium steel, spring steel, etc. and also suitable for magnetic steel hard to be demagnetized.
- Can be demagnetized effectively by passing its front and rear sides over the demagnetizer.
- Automatic detection will be made subject to customer's requirements.
- With wide demagnetize range, high effectively, ergonomically designed and easy operation.
- Automatic detection system attached for electric-saving.

**特點:**

- 適用零組件、配件、大型模具、大型鋼板，固定方式脫磁使用。
- 脫磁有效範圍大，達480mm。
- 脫磁工件有效厚度可達110mm。
- 適用較難脫磁材質，如高碳鋼、軸承鋼、鎳鉻鋼、彈簧鋼、模具鋼等保磁力強的材質，脫磁困難的磁鋼，也可以輕易地發揮脫磁效果。
- 可連續通過使用。
- 自動偵測，可依客戶要求訂製。
- 平板落地型工件脫磁機。
- 脫磁面最寬，磁感應強，人體工學設計，好操作。
- 自動偵測省電系統超省電。

Range of Demagnetize

脫磁範圍



Thickness of Demagnetize

脫磁厚度: 110 mm



mm

Model 型號	Input Voltage 電源	Current 電流	Duty Cycle 使用率	Dimension 尺寸			Net Weight 重量
				L長	W寬	H高	
EHD-620	AC 220V / 380V (3 Phase)	12A / 7A	100% 連續使用	430	620	760	105 kg

### Standard Accessories-- Auto Detector Display Power Saving System

#### 標準附件-自動偵測顯示省電系統

EAD-11



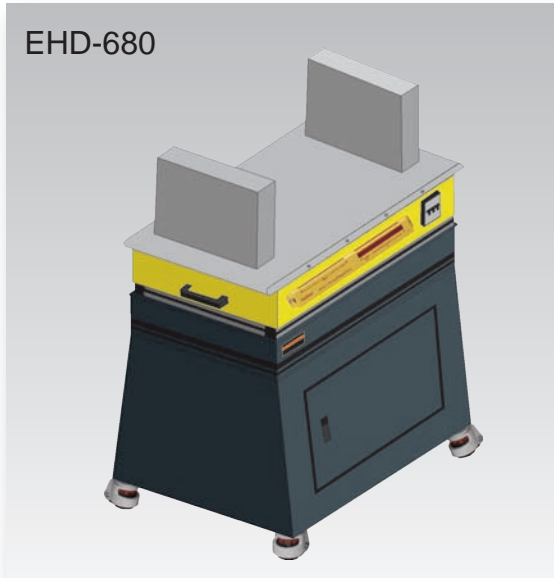
**Feature:**

- Fully automatic detect workpiece to power ON.
- 10-30 seconds automatic power OFF while the workpiece is away from the demagnetizer.
- Complete electronic control, more stable and reliable.
- Power saving system saves more than 60% electricity consuming.

**特點:**

- 全自動偵測工件啟動電源。
- 工件離開後10~30秒自動關閉電源。
- 全電子無接點控制，可靠耐用。
- 省電效果可達60%以上。

**U TYPE SUPER POWERFUL DEMAGNETIZER**  
**超強力型脫磁器**

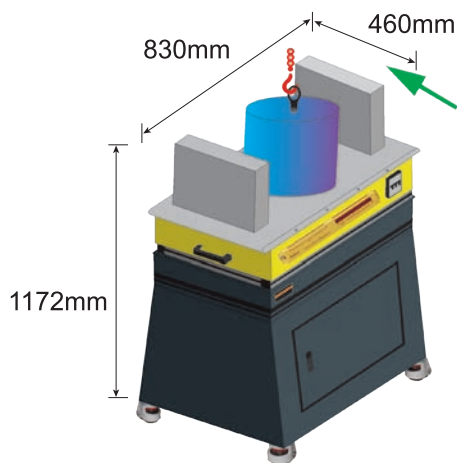


**Feature:**

- Suitable for large production of component spare parts, attachments, tools, etc. for fixed way demagnetization.
- Range of demagnetize: 480mm.
- Max. thickness of workpiece can be demagnetized: 110mm
- Super powerful demagnetization for materials with strong retentivity such as high speed steel, bearing steel, nickel chromium steel, spring steel, etc. and also suitable for magnetic steel hard to be demagnetized.
- Can be demagnetized effectively by passing its front and rear sides over the demagnetizer.
- U type designed with 3-sides demagnetization.
- Demagnetizer can be moveable with effective demagnetization process.
- Automatic detection system attached for electric-saving.

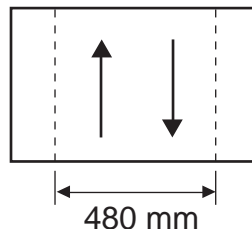
**特 點:**

- 適用零組件、配件、大型模具、大型鋼板，固定方式脫磁使用。
- 脫磁有效範圍大，達480mm。
- 脫磁工件有效厚度可達110mm。
- 適用較難脫磁材質，如高碳鋼、軸承鋼、鎳鉻鋼、彈簧鋼、模具鋼等保磁力強的材質，脫磁困難的磁鋼，也可以輕易地發揮脫磁效果。
- 可連續通過使用。
- U型三面脫磁感應，工作吊著直接通過，並可移動脫磁機，效果好。
- 自動偵測省電系統超省電。
- 適用大型工件模具等。



Range of Demagnetize

**脫磁範圍**



Thickness of Demagnetize

**脫磁厚度: 110 mm**



mm

Model 型號	Input Voltage 電源	Current 電流	Duty Cycle 使用率	Dimension 尺寸			Net Weight 重量
				L長	W寬	H高	
EHD-680	AC 220V / 380V (3 Phase)	12A / 7A	100% 連續使用	460	830	1172	170 kg

**Standard Accessories-- Auto Detector Display Power Saving System**  
**標準附件-自動偵測顯示省電系統**



**Feature:**

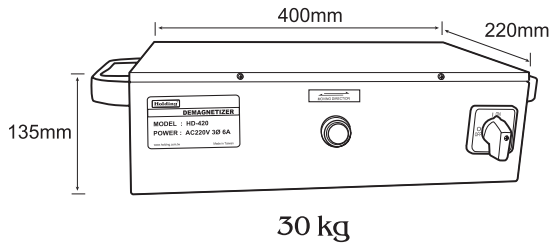
- Fully automatic detect workpiece to power ON.
- 10-30 seconds automatic power OFF while the workpiece is away from the demagnetizer.
- Complete electronic control, more stable and reliable.
- Power saving system saves more than 60% electricity consuming.

**特 點:**

- 全自動偵測工件啟動電源。
- 工件離開後10~30秒自動關閉電源。
- 全電子無接點控制，可靠耐用。
- 省電效果可達60%以上。

**POWERFUL TYPE DEMAGNETIZER**  
**強力型脫磁器**

EHD-380



**Feature:**

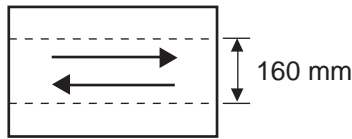
- Suitable for large production of component spare parts, attachments, tools, etc. for fixed way demagnetization.
- Range of demagnetize: 160mm.
- Super powerful demagnetization for materials with strong retentivity such as high speed steel, bearing steel, nickel chromium steel, spring steel, etc. and also suitable for magnetic steel hard to be demagnetized.
- Can be demagnetized effectively by passing its front and rear sides over the demagnetizer.

**特 點:**

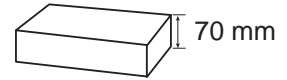
- 適用零組件、配件、大型模具、大型鋼板，固定方式脫磁使用。
- 脫磁有效範圍大，達160mm。  
適用較難脫磁材質，如高碳鋼、軸承鋼、鎳鉻鋼、彈簧鋼、模具鋼等保磁力強的材質，脫磁困難的磁鋼，也可以輕易地發揮脫磁效果。  
可連續通過使用。

Range of Demagnetize

脫磁範圍



Thickness of Demagnetize  
脫磁厚度: 70 mm



mm

Model 型號	Input Voltage 電源	Current 電流	Duty Cycle 使用率	Dimension 尺寸			Net Weight 重量
				L長	W寬	H高	
EHD-380	AC110V AC220V	12A 6A	100% 連續使用	220	420	135	30 kg



**LED LIGHTING LAMP**  
**LED燈座系列**

LED-L95, LED-M95



LED-L20, LED-HP20  
 (Spot Type)



LED-L601, LED-601  
 (Spot Type)



含磁座

LED-SS20 (Spot Type)



含磁座

LED-L60 (Spot Type)



含磁座

LED-S60 (Spot Type)



含磁座

**Working Example 工作範例**



**Feature:**

- LED-L95 & LED-M95 are installed water-proof lighting head and specially adopted the tempered glass, so far, which can be endured the large temp variation, very bright, glare-free. Furthermore, there are equipped foldable arm and coupled with various attachment, so that, they are ideal for use in applications where the lighting cannot be attached close to the area to be illuminated since they are already designed for use on machine tool. LED-HP20, LED-L601, LED-SS20, LED-L60 and LED-S60 are spot type ideal for workplace lighting if bright concentrated light is required in performance not too large area illumination. Suitable for use at small machineine such as CNC engraving machine, sewing maching, lathe machine, working benches and working table...etc.

- LED-SS20 with holding power 80kgf magnetic base.

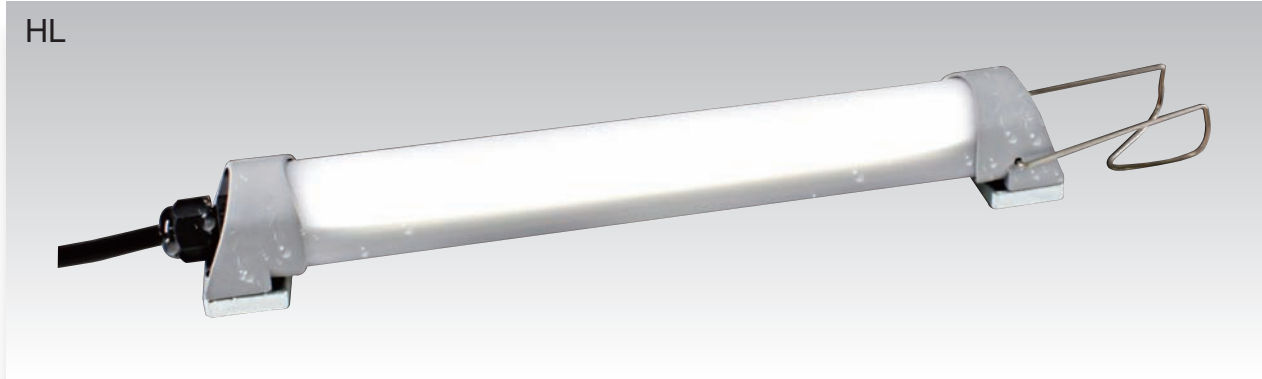
**特 點:**

- LED工作燈，配合鵝頸式防塵軟管及伸縮軟管，最適合在照明區域不需太大之場所。尤其配合磁性座之特殊附件，即使是在不盡理想之位置作業，亦可揮灑自如，因此，此系列之工作燈可廣泛地使用在小型中心切削工具機、銼床、鑽床、雕刻機、鉗工工作台及縫紉機等不勝列舉。

Model 型號	Arm Length 臂長	Voltage 電壓	Watt 瓦特
LED-L95	400x400mm	110V / 220V	9W
LED-M95	220x175mm	110V / 220V	9W
LED-L20	415x400mm	110V / 220V	4W
LED-HP20	225x280mm	110V / 220V	4W
LED-L601	400mm	110V / 220V	4W
LED-601	250mm	110V / 220V	4W

Model 型號	Arm Length 臂長	Voltage 電壓	Watt 瓦特
LED-SS20	347mm	110V / 220V	7W
LED-L60	400mm	110V / 220V	4W
LED-S60	--	110V / 220V	4W

**HL SERIES WATER-PROOF LED LAMP**  
**HL系列防水式LED燈**



**Feature:**

- Power saving LED lamp. 110V~220V wide voltage range. This lamp is designed with built-in power magnets to attach on steel surface (as fig. B) and with hook on objects (as fig. A) or to brace up the lamp.
- Ideal for machine maintenance. Ip67 proof to protect lamp from corrosive fluid or air.

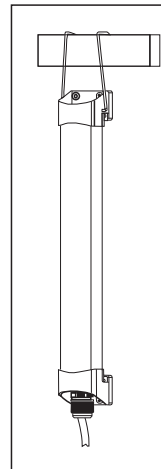
**特點:**

- LED節能燈具。適用電壓範圍達110V-240V用電無受限，適用工具機維修使用，燈具附屬強力磁鐵，可吸附於任一可吸附的金屬表面上(如圖B)，或使用掛勾勾於任何物體上(如圖A)，亦可使用掛勾架起燈具改變光源投射方向(如圖C)，機台維護不須再為光源煩惱。
- 保護等級達IP67亦可裝設在任何不具腐蝕性的氣液體環境下使用。

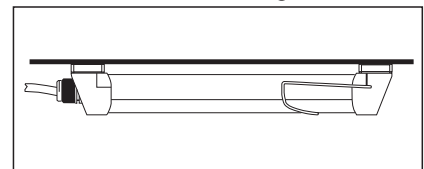
**Methods of Attachment 配件**

Magnet Base 磁鐵座	Hook 掛鉤

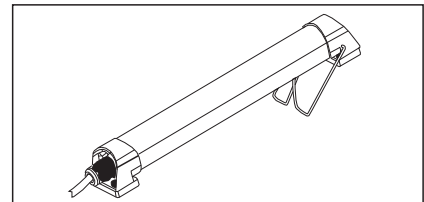
**A. 掛勾**  
Hook



**B. 強力磁鐵吸附**  
Power magnet

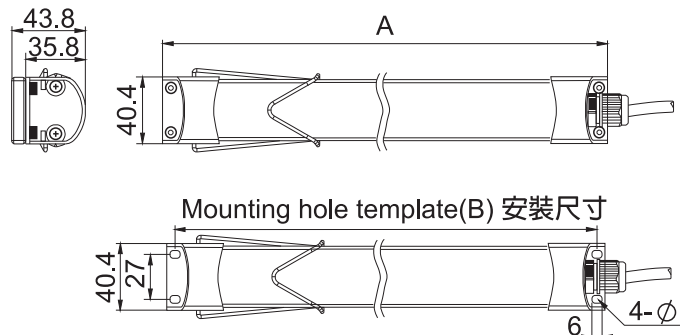


**C. 使用掛鉤架起燈具**  
Use hook to brace up one end



**Physical Dimension 外觀尺寸** mm

Model 型號	A	B
LED-HL18	300	290
LED-HL36	520	510



Model 型號	Supply Voltage 電源	Watt 瓦特	DEG 投射角度	Lux 照度	lm 光通量
ELD-HL18	AC 110V / 220V	7.5W	120°	0.65M/500Lux	1080lm
ELD-HL36	AC 110V / 220V	15W	120°	1.0M/500Lux	2160lm



**EARTH-CHAIN**

**Power that works.**

**MAGNETIC & PRECISION TOOLS  
磁性應用工具製造廠**

**MEMO  
筆記**

A large rectangular area with a pink header and a white body containing horizontal dashed lines for writing.



## 其它系列產品 / OUR OTHER PRODUCTS SYSTEM

Mag Vise 磁力夾具系統  
【可作五面同步加工】

永磁式電控磁盤 EEPM系列  
永磁式磁力工作檯 ECB系列

Mag Vise 磁力夾具系統  
【可作五面同步加工】

永磁式電控磁盤-連續型 EEPM-C系列  
2012 & 2014 ECE PRODUCT SHOW & 2013 & 2014 EARTH-CHAIN

永磁式電控磁盤 EEPM-CH & EEPM-CHS系列  
EEPM-CH 專 2012 & 2014 EARTH-CHAIN

開關式永久磁性吊盤  
ELM系列

安全鎖重 3.5 噸

磁力更強・使用更安全  
體積小・更簡便・更輕便

鑽頭磨床機  
SG高速鑽頭磨床機

傳統及新式鑽石磨床系列  
簡單・快速・精準  
操作簡單・不需經驗・保證精準快速

SGZ新快速鑽頭磨床機  
磁鏡力磨床機  
鏡力・磨鏡切削機

[www.earth-chain.com.tw](http://www.earth-chain.com.tw)

儀辰企業股份有限公司

台灣台中市43546梧棲區港埠路一段551號(關連工業區)

TEL:+886-4-26303737

FAX:+886-4-2630-3636

EARTH-CHAIN ENTERPRISE Co.,Ltd.

No.551,Sec.1,Gangbu Rd., Wu-Chi Dist., Taichung City,Taiwan (43546)

E-mail:ece.richard@msa.hinet.net



(812) 335-59-35

info@suntools.ru

www.suntools.ru

г. Санкт-Петербург, пр. Славы, 40 корпус 2